

# Scrutiny & Overview Committee Supplementary Agenda



**5. Delivery of the Growth Zone (Pages 3 - 10)**

To review progress to date of the Growth Zone programme.

JACQUELINE HARRIS BAKER  
Council Solicitor and Monitoring Officer  
London Borough of Croydon  
Bernard Weatherill House  
8 Mint Walk, Croydon CR0 1EA

Simon Trevaskis  
0208 7266000  
[simon.trevaskis@croydon.gov.uk](mailto:simon.trevaskis@croydon.gov.uk)  
[www.croydon.gov.uk/meetings](http://www.croydon.gov.uk/meetings)

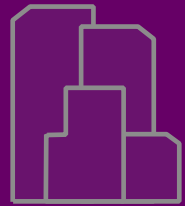
This page is intentionally left blank



# DELIVERING THE GROWTH ZONE

**CROYDON**  
[www.croydon.gov.uk](http://www.croydon.gov.uk)

# £5.25 billion regeneration initiative creating:



2.8 MILLION FT<sup>2</sup>  
NEW GRADE A  
OFFICE SPACE



WESTFIELD & HAMMERSON'S  
STATE-OF-THE-ART RETAIL  
AND LEISURE DESTINATION



21 CITY CENTRE  
DEVELOPMENT OPPORTUNITIES



23,594  
NEW JOBS



5,097  
JOBS IN THE  
CONSTRUCTION PHASE



28 NEW PUBLIC  
SQUARES & SPACES



A NEW WORLD-CLASS  
TRAIN STATION

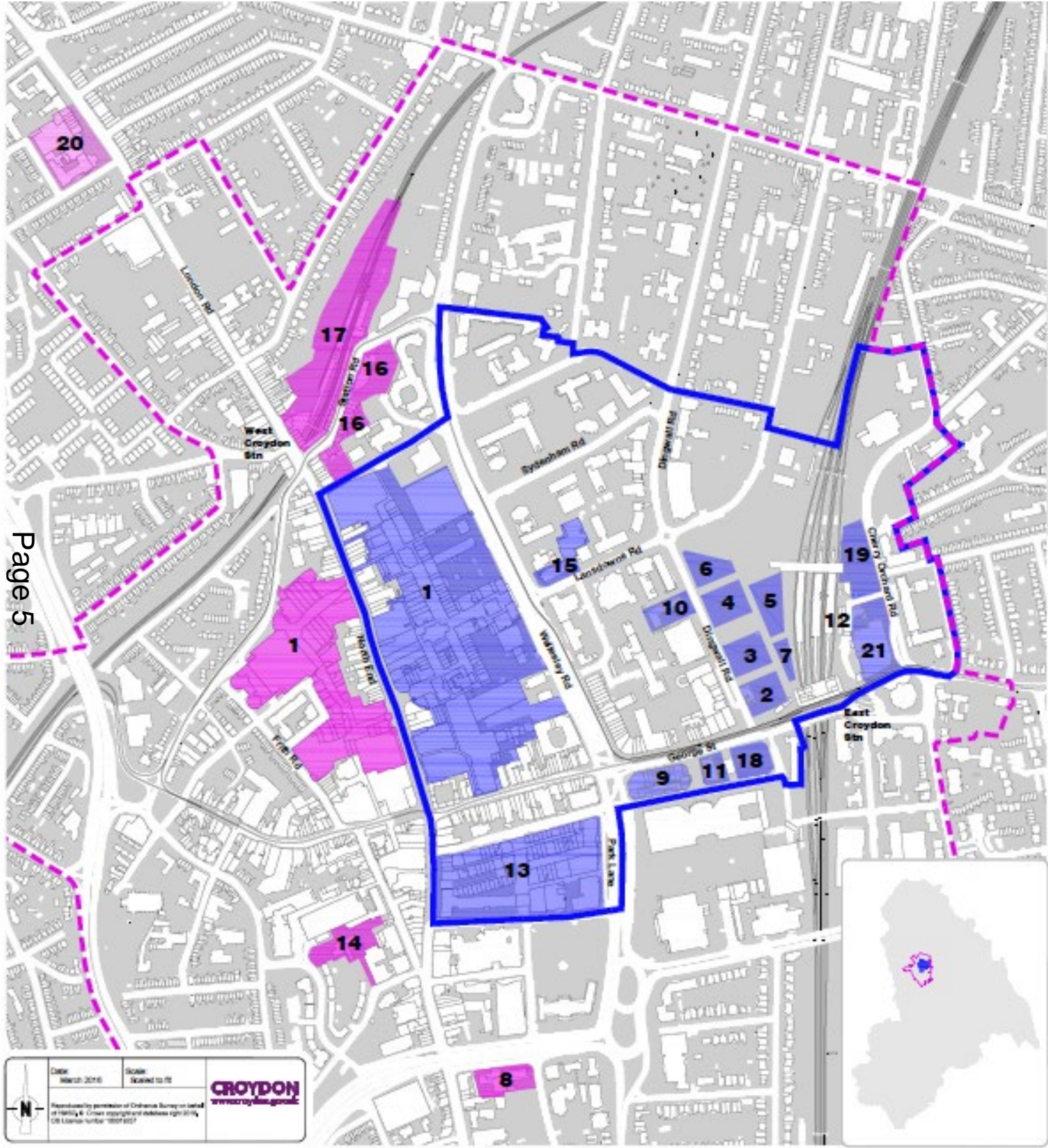


circa 14,000  
NEW HOMES



A REVITALISED AND VIBRANT  
CITY CENTRE ENVIRONMENT





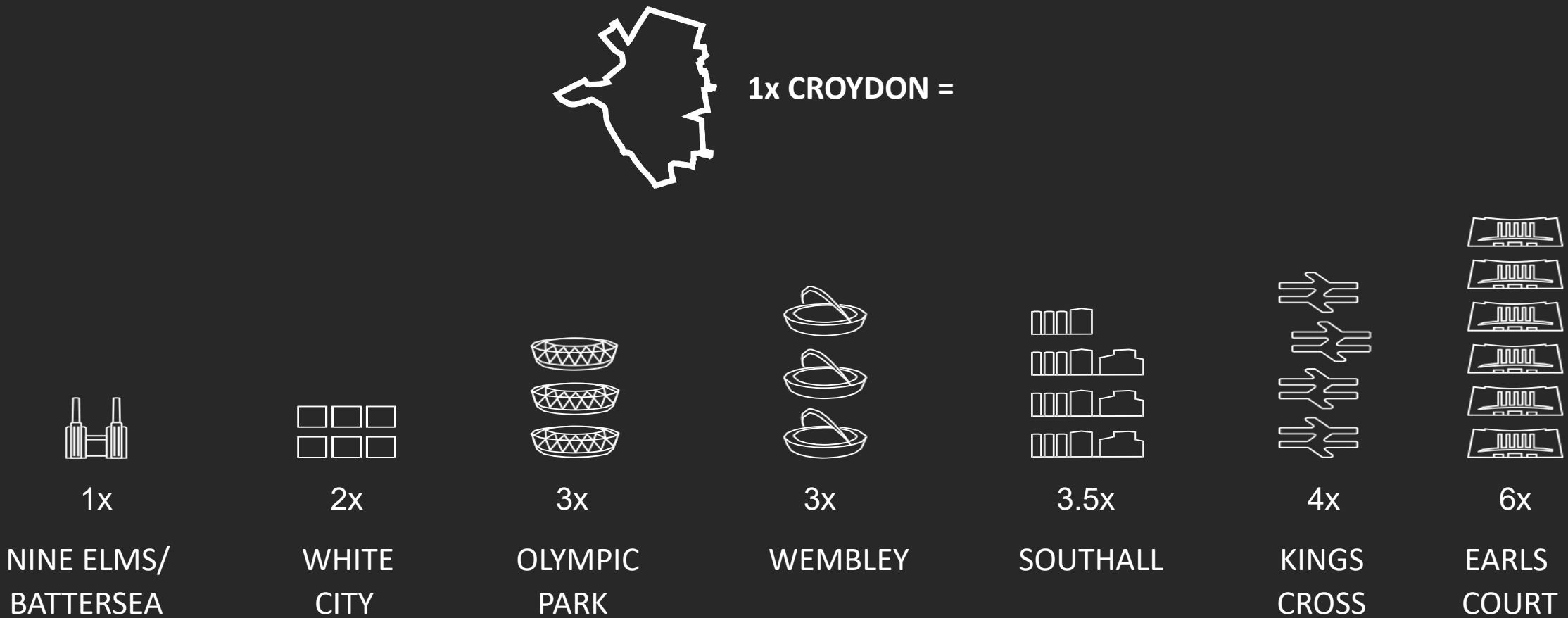
Key

- Growth Zone
- Ranked developments within the Growth Zone
- Opportunity Area (OA)
- Ranked developments within the OA
- Ranked developments outside the OA

Ranked developments:

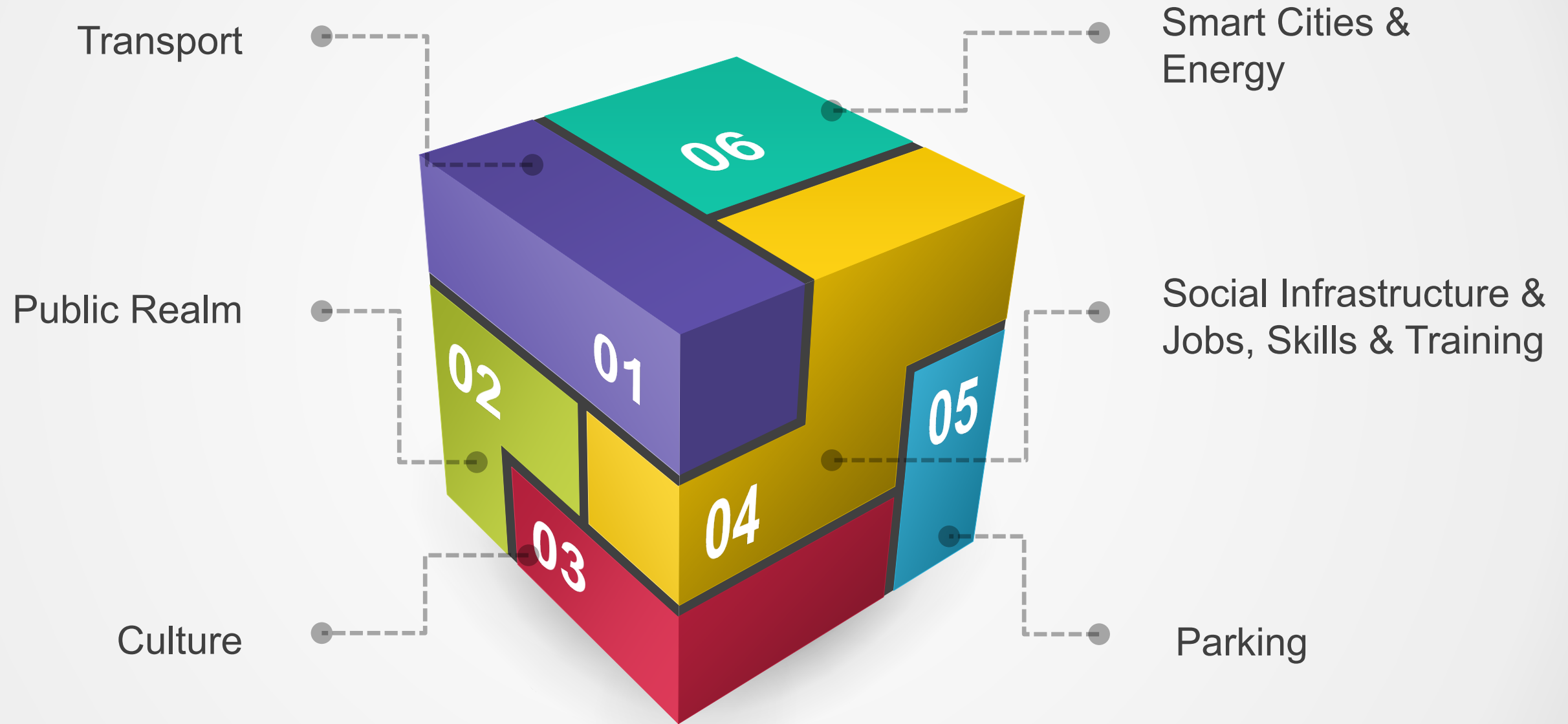
- |   |  |
|---|--|
| 1. Westfield/Hammerson<br>Redevelopment | 13. Mid Croydon Masterplan<br>(part of) Queen's Square   |
| 2. Ruskin Square (B5) (Office)          | 14. Exchange Square and<br>Pumping Station               |
| 3. Ruskin Square (B4) (Office)          | 15. 1 Lansdowne Road                                     |
| 4. Ruskin Square (B3) (Office)          | 16. West Croydon Bus Station<br>and St. Michael's Square |
| 5. Ruskin Square (B1) (Office)          | 17. West Croydon Rail Station<br>and Shops               |
| 6. Ruskin Square (B2) (Office)          | 18. Chroma, 100 George Street                            |
| 7. Ruskin Square<br>Retail/Leisure      | 19. Morello Tower  |
| 8. Impact House                         | 20. Zodiac Court   |
| 9. Suffolk House                        | 21. Royal Mail Sorting Office                            |
| 10. Jobcentre Plus                      |  |
| 11. 96 George Street                    |  |
| 12. Morello Office                      |  |

# CAPACITY FOR GROWTH

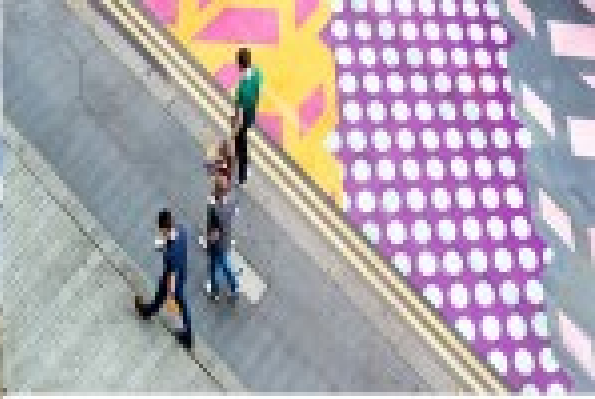


All figures refer to the London Plan 2011 and stand for the comparison between the total Opportunity Area except: Olympic Park (Homesprovision) and Southall (total jobs, office space and homes). [www.london.gov.uk/priorities/planning/london-plan](http://www.london.gov.uk/priorities/planning/london-plan)

# Croydon Growth Zone Themes









# Looking to the future

Artist impression of what Croydon skyline may look like 2030





# Croydon Growth Zone Themes

